

# N SERIES

105 - 201 HP

**VALTRA**

**YOUR  
WORKING  
MACHINE**





# SMART IN SIZE. PERFECT IN PERFORMANCE.

Your land is your life.  
Your farm is your foundation.  
Your crop is your career.  
Your tractor is the tool of your trade.

That's why it's a Valtra.  
Like a craftsman's trusty tools, your Valtra gives you the confidence and the guts  
to get the job done. Every day. Every time. In every working environment.

At Valtra, we have always chosen the path less walked – because where we come from,  
that's how the paths are. We don't hesitate to walk the extra mile for you.  
We do things like this because it's the best way to do them.  
And because we believe in getting things done.

You don't compromise. Neither do we.

Get the job done.  
Get a Valtra.  
Your working machine.





## **YOUR**

Smart in size. Perfect in performance.....	2
Reliable, easy to use, low cost of ownership ....	6

## **WORKING**

Highlights.....	8
New cab .....	10
Versatile workhorse .....	12

## **MACHINE**

Performance .....	14
Engine and efficiency .....	16
A choice of controls .....	18
SmartTouch armrest.....	20
Smart Farming .....	22
Valtra Unlimited .....	24
Options .....	26
Connect, Care & Co.....	28
Services .....	30
Technical specifications.....	32



# NO CHALLENGE TOO BIG. NO TASK TOO SMALL.

The engine, transmission, chassis and cab are all made in Finland, with no compromises. Every year we build 23,000 Valtra tractors for customers in 75 countries. This makes us the leading tractor manufacturer in North Europe and the fifth largest western tractor brand in the world. We have been in Brazil since 1960, where we are the market leader in high horsepower tractors.







Where we come from, we know what it's like to work day and night, summer and winter. We know about balancing jobs and requirements, without compromising on any of them. We also know our customers. We don't talk much, but we listen. You told us that there are three big things you look at when you choose a Valtra. It has to be reliable, around the year and from one year to the next. It has to be easy to use when you are working hard. And it has to provide the lowest total operating costs. That's how we built the fourth generation Valtra N Series. It has many of the same features as its

big brother, the T Series, but in a very compact form. In fact the 201 hp engine makes the new N Series the most powerful 4-cylinder tractor there is, with the best power/weight ratio in its class. This tractor is light and agile, but it puts power on the ground and has plenty of power for PTO.

The 4-cylinder N Series is the workhorse of the Valtra range. With every new model, we make various improvements, but one thing remains the same. This is a reliable tractor that will work hard for you, year after year.



# PLANT YOUR MONEY WISELY.

You work hard for your money and want good value when you spend it. The N Series tractor makes every cent count. Every day, every season, the N Series is your working machine.

## MODELS AND HORSEPOWER

<b>N104 HiTech</b>	105-115 HP	<b>N134 Active</b>	135-145 HP	<b>N154 Active</b>	155-165 HP	<b>N174 Active</b>	165-201 HP
<b>N114E HiTech</b>	115-125 HP	<b>N134 Versu</b>	135-145 HP	<b>N154 Versu</b>	155-165 HP	<b>N174 Versu</b>	165-201 HP
<b>N124 HiTech</b>	125-135 HP	<b>N134 Direct</b>	135-145 HP	<b>N154 Direct</b>	155-165 HP	<b>N174 Direct</b>	165-201 HP
<b>N134 HiTech</b>	135-145 HP	<b>N154 HiTech</b>	155-165 HP	<b>N174 HiTech</b>	165-201 HP		



### **Reliability, year after year**

We know that if we want to get the job done right, we'd better do it ourselves. That's why we make the major components in-house. We've designed and engineered the intelligent chassis, robust transmission and spacious cab ourselves. AGCO Power, the "Sisu", has been the Valtra engine for more than 60 years. It is an engine that sets the standard for reliability.

### **Ease of use for any job**

The N Series provides power for pulling a plough and agility for moving hay bales. It gives excellent visibility for precision work and versatility with PTO for power-hungry implements. With the N Series, you don't have to work harder, because you are working smarter. The transmission operation, with a new drive lever could not be easier. The tractor is compact, but inside the cab you have plenty of space and comfort. Daily maintenance is simple: checking the oil and

cleaning the radiators take almost no time at all. And finally, you get the best fit for your farm, with the right size and the options you need, factory installed and covered by warranty.

### **Low total cost of ownership**

Total cost of ownership is about the big picture and the small details. The big thing is to have a hard-working machine that is built for the task at hand. But we've gone further with some major innovations. They consist

of several features that lighten the load on your wallet. The 600 hour service interval cuts maintenance costs and the AGCO Power engines give you the best overall liquid economy. Select Premium care or a service contract that matches your monthly costs to your annual running hours. AGCO Finance helps you to find an optimal solution for payment and use. At the end of the day, choosing genuine Valtra parts and services guarantees the highest resale value for your tractor.





# WITH THE RIGHT TOOL FOR THE JOB, IT TAKES LESS WORK TO DO MORE.

Get more done with less effort,  
with the right tool for your job. We  
build your tractor to meet your  
requirements, creating a working  
machine as versatile as you are.  
Come for a test drive!





1. Skyview cab with 365° Day visibility and over 6 m² window space
2. Pneumatic AutoComfort cab suspension
3. Hydraulic or Pneumatic front axle suspension
4. 270° windscreen wiper and heated front and rear windows
5. Max total weight up to 11 t
6. Turning radius 4.5 m
7. Integrated 47 kN front lift and up to 78 kN rear lift
8. Factory installed front loader with integrated cast subframe
9. The most comfortable and quiet (70 dB) cab with 1 or 2 doors
10. Best ground clearance on the market (55 cm)
11. Electric TwinTrac reverse driving and 180° swivelling seat
12. Safety camera
13. Efficient LED working lights
14. The most powerful 4 cylinder engine with max 201 hp and 800 Nm torque
15. Valtra Power Management
16. EcoPower fuel saving option
17. Fuel efficient Stage IV or Stage V engines
18. 5 speed powershift with Hitech, Active and Versu, or Direct CVT
19. Powershift Revolution
20. Low idling speed 700 rpm
21. Load sensing hydraulics with up to 200 l pump capacity
22. 600 hour service interval
23. Integrated front linkage
24. Fuel tank up to 315 l capacity
25. Electric 3 speed PTO with Sigma Power and ground speed PTO
26. Roof air intake for engine
27. ASR (Automatic slip regulator)









# COMPACT OUTSIDE, SPACIOUS INSIDE.

Compact on the outside but spacious inside. Climb into the driver's seat and relax. When it comes to comfort and safety, we make no compromises.



## Quality you can see but not hear

The unique convex shape of the cab gives you more space where you need it: at shoulder and elbow height. The windows provide almost 7 m<sup>2</sup> of visibility. The cab is narrow in the front to give space for the exhaust pipe and the high air intake. It's built for reverse driving with TwinTrac, with a 180° swiveling seat and plenty of legroom in the rear. As always with a Valtra tractor, the N series cab is a quiet workplace. Thanks to the solid, well-fitting doors (one or two), excellent insulation, and fewer holes for piping, the noise level in the cab is approximately 70 dB. Even in rugged working conditions there is no extra noise inside the cab.

## You work better when you see better

The Valtra cab gives you the best visibility in all directions with the Valtra 365 Day visibility concept: day or night, summer or winter, in reverse driving or doing front loader work. The new Skyview cab option gives you the ultimate visibility for reverse driving and the roof window provides great visibility for front loader work. The narrow pillars and exhaust pipe enable you to see more. The 270° windshield wiper keeps the heated front windscreen clear in any weather. Premium LED working lights provide visibility in all directions. With black panel mode you can dim the interior lighting to maximize visibility outside. A safety camera gives you a clear view of the hitch or implement.

## Don't work harder. Work smarter.

Everything you need is at your fingertips with the new 5-speed powershift or Direct CVT. You have a drive lever for driving and a joystick for controlling the hydraulics. You have four seat options – from mechanical suspension to the Valtra Evolution seat with air-conditioning and pneumatic suspension. Two cab suspensions are available: the luxury pneumatic AutoComfort and a new mechanical suspension system. Finally, it's going to be a long day, so there's a coolbox to keep your lunch fresh.

## Technology in the background. Ease of use up front.

It's not about technology. It's about making work as easy and efficient as possible. Automatic features are at your fingertips when you need them – push the ECO button and engage U-Pilot or transmission automatics, to make the tractor handle itself. With Auto-Guide you get cm/dm accuracy. The SmartTouch terminal and Valtra Connect are available factory fitted, ready to use when the tractor arrives at your farm, all covered by the same service and warranty.



# SPECIALIZE IN ANYTHING. COMPROMISE IN NOTHING.



## **The workhorse for mixed farming**

The new N Series is the most powerful 4-cylinder tractor in the industry, with a power boost providing up to 201 hp and 800 Nm torque. With up to 200 l/min hydraulics you have enough power for your implements, with up to 78 kN lift capacity in the rear and an 890 mm lifting range. With its optimal wheel base and the perfect 40%–60% weight distribution you get a good grip on the ground and good balance for front loader work. You can also select automatic steering options (up to cm accuracy) directly from the factory.

## **Great in grassland**

This tractor has impressive agility in tight corners, with just a 4.5 m turning radius – even with a front loader and front linkage. You can enhance the agility further with Valtra's adjustable QuickSteer. There are plenty of options, such as an integrated front loader with a hydraulic assistant, a Skyview cab for excellent visibility, heavy duty axles, up to 7 valves in the rear and 4 valves in front, different speed options from 40 km/h close to 60 km/h,

and trailer couplings that work like a precision watch. Front PTO and rear 3 speed PTO with a ground speed option provide unmatched power for your implements.

## **Contracting, multitasking, and more**

There are 24 hours in a day, and a different job for each one. You can tailor the Valtra N Series exactly for your requirements, be it contracting, forestry, or municipal work. The Valtra Direct CVT transmission is at its best in multitasking and road transport, and gives precision for front loader work. Valtra cabin and front axle suspension offer you more comfort than any other brand. For tough conditions and demanding tasks such as forestry you can equip your working machine with a 165 liter steel tank, bottom protection and bottom protection plate - 55 cm ground clearance is there as standard. Valtra's unique TwinTrac reverse driving will make your working days more efficient and economical. And no matter what work you are doing, in Eco mode (in the N114e and N154e) you can reduce your fuel consumption by an additional 10%.



The N Series offers unmatched versatility, whether you are doing mixed farming, dairy farming, municipal work, or contracting. Just select the horsepower, transmission, hydraulics, and optional features that are ideal for you. AGCO Finance offers unmatched service, with payment plans matching your exact needs.





# SIZE DOESN'T MATTER. PERFORMANCE DOES.

The N Series tractor has the most powerful and responsive 4 cylinder engine on the market. The 4.4. and 4.9 liter engines provide from 115 up to 201 hp and 800 Nm of torque. AGCO Power has been the heart of every Valtra tractor for as long as we have been building tractors. Your next working machine has more than 60 years behind it and more than 10,000 hours ahead of it.





#### **When you need an extra boost**

Sigma Power delivers extra power for PTO work. It is especially useful when you are working with implements that require a lot of PTO power, such as chippers and power harrows. In heavy PTO use, the engine will automatically produce up to 10 hp more power. The Sigma+ system gives you up to 36 hp of additional power in the N174.

#### **The right choice, right from the start**

We decided back in 2008 to rely on one technology – exhaust after-cleaning with SCR (Selective Catalytic Reduction). DOC (Diesel Oxidation Catalyst) and SCR catalytic converters clean the exhaust gas in Valtra

Stage IV engines. In Stage V engines a particle filter has also been added. Valtra provides unmatched reliability in an easy-to-maintain package – this will lower the total cost of ownership of your tractor and keep you working day in, day out.

#### **Slow down. Your machine will live longer**

Valtra offers two EcoPower models that let you select the engine setting to lower fuel consumption. Engine torque increases while the top revs are reduced by 20 percent. This not only reduces engine noise and vibration; it also means fuel savings of up to 10 percent! The reduced revs and piston speed reduce engine wear and help your tractor live longer.

## AIRES AIR-SUSPENDED FRONT AXLE

The AIRES air-suspended front axle offers a faster response and a better shock absorption level, particularly in fast axle movements. This makes operator comfort and traction superior over previous, hydro-pneumatic solutions. The AIRES suspension features a separate, self-levelling pneumatic suspension. The suspension system uses compressed air which is sure to work also in cold temperatures.





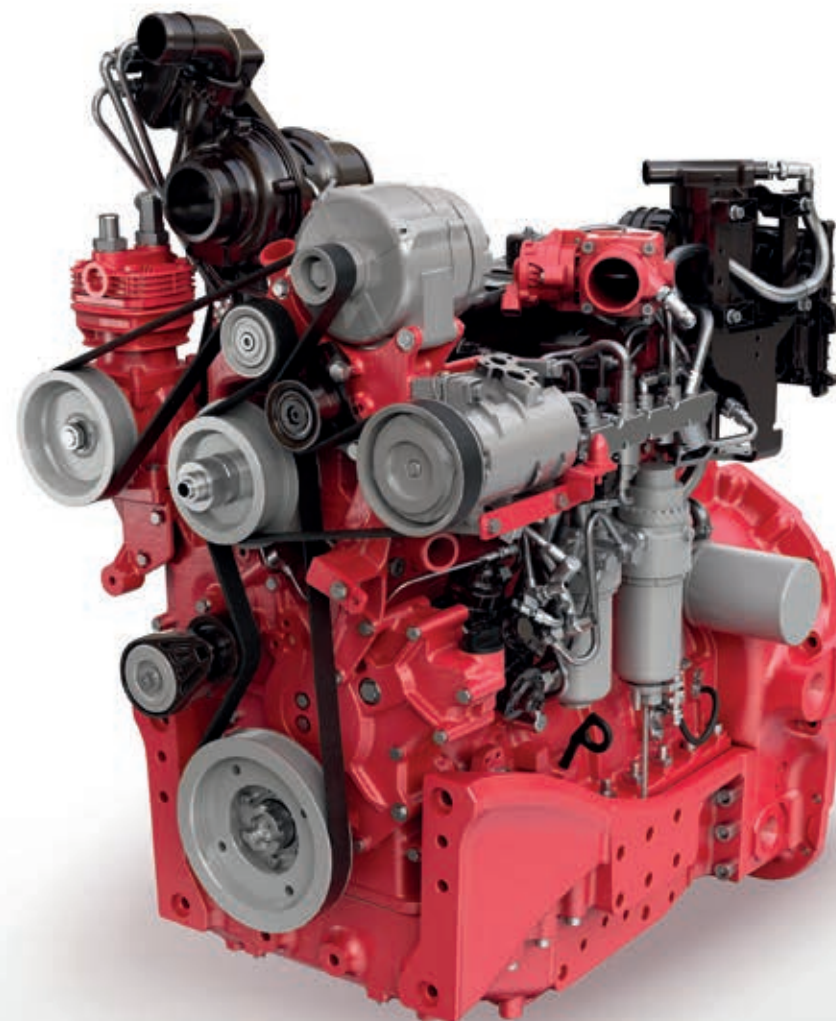
# EVERY LITRE YOU SAVE IS MONEY IN THE BANK.



You get exactly the power you need, when and where you need it. There is plenty of power for pulling and PTO, but it is only in use when you need it. Here are just a few examples of Valtra power management solutions.

## SAVING YOUR MONEY

- **Exhaust After Treatment:** Both Stage IV and V engines clean the exhaust gas when it has passed through the engine – without recirculation. This guarantees the best fuel efficiency and a long engine lifetime.
- **Valtra Power Management:** The N174 with electronically controlled power management gives you up to additional 36 hp for PTO and transport tasks when you need it. When using engine speed memory, the tractor automatically recalls the selected PTO speed.
- **High precision Common Rail injection:** The new 2000 bar system offers a finer fuel spray and perfectly timed fuel injection that increases fuel efficiency.
- **Efficient turbo technology:** A single turbocharger with an electronically controlled bypass valve offers faster engine response, better low-rev torque and top notch reliability.
- **EcoPower mode:** Up to 10% savings in fuel consumption and a reduction in engine wear can be achieved with the fuel consumption friendly N114 eco and N154 eco models.
- **EcoSpeed:** In EcoSpeed tractors, the max. driving speed of 40 km/h is achieved with a low engine speed of just 1600 rpm for lower fuel consumption.
- **Low idling speed:** The low idling speed of 700 rpm (compared to the competitor's 850 rpm) helps save fuel, and reduces noise while parked or attaching implements.
- **Cooling system:** The clever cooling package, roof air intake, electronic visco fan control and optimized heat removal all add up to lower fuel consumption. Every detail is right-sized to ensure optimal performance in a compact tractor.





# VALTRA POWER SOLUTION

Let us help you do more. Valtra Power Solution is a comprehensive package of pioneering solutions enabling decreased fuel consumption, reduced emissions and optimized driveline efficiency. On the engine side, AGCO Power has been able to cut Nox (Nitrogen Oxide) and PM (Particulate Matter) emissions by over 95% compared to 1996 levels. Valtra is committed to continuous development in offering pioneering fuel and emission reducing solutions.



## ASR: Less slip, more grip

The revolutionary new Automatic Slip Regulator (ASR) automatically manages wheel slip to improve the pulling grip while significantly improving fuel economy. This feature completes the 4WD and automatic differential locking and the traditional AutoControl power slip control in Versu and Direct models.

## SAVING YOUR TRACTOR

- **Powershift revolution:** This next generation transmission and engine management software always provide the most optimal torque for your work. The intelligent automatic shifting makes sure that you always have the power you need in the right gear to save fuel. With CVT and Powershift, it's easier than driving an automatic transmission car. Focus on your work while enjoying the best driving experience in the industry.





# AN UNBEATABLE RANGE OF CHOICE

Valtra N series offers more choices than anyone else – with the help of our experienced salesman your working machine can be tailored to match your exact needs. Valtra offers six power levels and five transmission: HiTech, HiTech with HiTrol, Active, Versu and Direct. Your Valtra N Series HiTech and Active models can be equipped with a standard user interface or with the practical and convenient control armrest.

## HITECH

- 5PS, with open centre 73/90 litre hydraulics
- Mechanical hydraulic controls

HiTech models N104 - N124 are also available with a turbine clutch option, providing extra convenience and precision for front loader and municipal applications.

## ACTIVE

- 5PS, with load sensing hydraulics
- Mechanical hydraulic controls
- New Joystick available in Active

Valtra Active is a revolutionary powershift technology with load sensing hydraulics at up to 200 l/minute, a hydraulic assistant and separate hydraulic and transmission oils.

In HiTech and Active models the transmission control is robotized, so there are no mechanical gear levers. These tractors can be equipped with easy-to-use basic controls or with a control armrest that lets you drive at all speeds using the small gear lever and cruise control.

## VERSU

- 5PS, with load sensing hydraulics
- Electrical hydraulic controls
- Valtra SmartTouch armrest with display
- Easy transmission and hydraulic settings

Valtra Versu is the king of the new generation powershift transmissions, with electronic hydraulic control, a hydraulic assistant, 115, 160 or 200 litre output, and separate hydraulic and transmission oils. It operates with the drive lever in automatic or manual mode. By choosing a Versu transmission, you get the ease of powershift and the flexibility of CVT in one package



### Join the Powershift Revolution

Valtra Powershift is the smoothest transmission on four wheels. Take your foot off the clutch and you are automatically in control – with Valtra you can drive your powershift tractor like a CVT. In automatic modes you shift automatically based on your acceleration and torque requirements – and you always get the best fuel economy.

The 5 step Powershift transmission has four ranges and is available in HiTech, Active and Versu. With two optional creeper ranges, you have 30 speeds in both

directions. The new gear lever, with manual and automatic modes, makes shifting precise and effortless. These models also have the Hill-hold feature, so you can get a smooth start with just the accelerator pedal, even uphill.

Versu models have a revolutionary, patented hydraulic assistant, giving you more hydraulic output automatically, either stationary or when driving, with no effect on driving speed. No other powershift can do it! – Available also in Active and Hitech if electrical front valves are fitted.

### DIRECT CVT

- CVT with load sensing hydraulics
- Electrical hydraulic controls
- Valtra SmartTouch armrest with display

This is the flagship of the range. The drive lever allows you to adjust the acceleration and deceleration with just your right hand. We offer versatile velocity control setups, including a manual transmission control for use with some special types of crop.





# COMMAND YOUR N SERIES

Valtra SmartTouch has raised usability to a new level. It's more intuitive than your smartphone. Settings are easily accessible within only two taps or swipes and all technology is integrated into the new easy-to-use format: Guidance, ISOBUS, Telemetry, AgControl and TaskDoc. SmartTouch is a standard feature of Versu and Direct models.



Easy to navigate menu structure.



The settings are logical and easy to set up with swipe gestures. All settings are automatically stored in the memory.



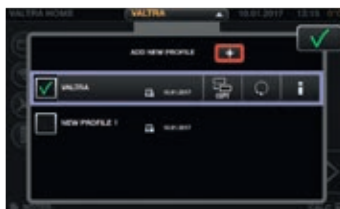
The 9" touchscreen, large controls, settings and functions are easy to understand.



You can assign any control to operate any hydraulic function, including front and rear hydraulic valves, front and rear linkages and the front loader.



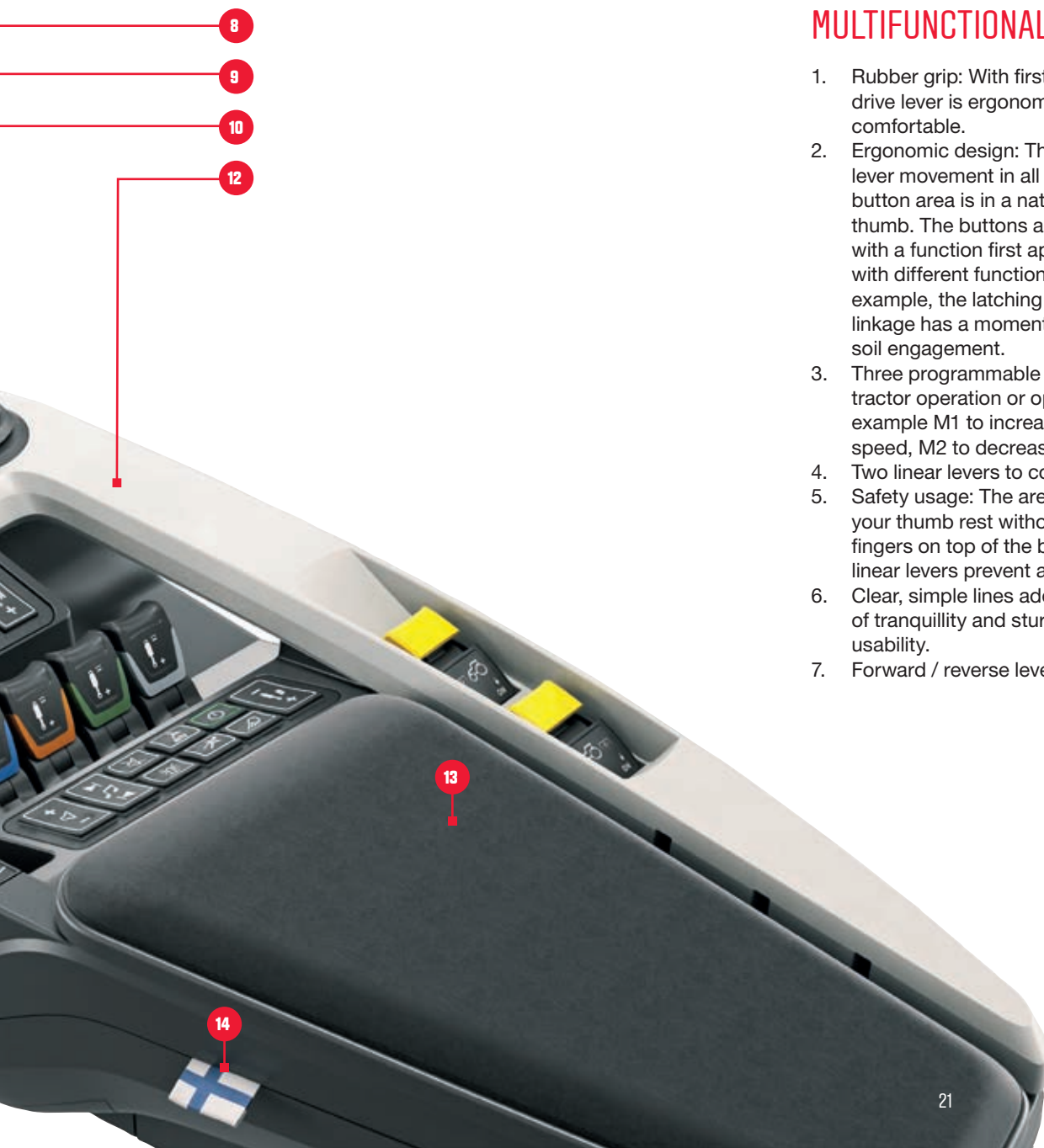
It's easy to configure the work lights using the 9" touchscreen. There are also on/off buttons for the work lights and beacon in the armrest.



Profiles for operators and implements which can be easily changed from any screen menu. All the setting changes will be saved in the selected profile.







## MULTIFUNCTIONAL LEVER

1. Rubber grip: With first-class materials the drive lever is ergonomic, easy to use and comfortable.
2. Ergonomic design: The design allows for easy lever movement in all four directions. The button area is in a natural position for your thumb. The buttons and switches are designed with a function first approach, therefore buttons with different functions look different. For example, the latching rocker switch for the rear linkage has a momentary down function for fast soil engagement.
3. Three programmable memory buttons for any tractor operation or operations (U-pilot). For example M1 to increase Driving speed or cruise speed, M2 to decrease it.
4. Two linear levers to control hydraulics.
5. Safety usage: The area between buttons lets your thumb rest without having to keep your fingers on top of the buttons. Humps around linear levers prevent accidental use.
6. Clear, simple lines add to the overall feeling of tranquillity and sturdiness, and improve usability.
7. Forward / reverse lever at the drive lever.

## SCREEN

8. No additional screens needed – Auto-Guide and safety camera displays are integrated into the SmartTouch screen. No need for additional monitors that block your visibility.

## JOYSTICK

9. The ergonomically positioned hydraulic joystick now includes a 3rd control for hydraulics on top.

## BUTTON & REAR LINKAGE AREA

10. Buttons: Their concave and convex shape helps you find frequently used buttons easily and quickly.
11. Rear linkage - The easy-to-use limiter enables even the smallest adjustments of the rear linkage.

## DESIGN

12. The functional structure of the armrest provides a good grip on rough terrain. All functions are easy to access due to the logical layout and the armrest gives good support to your hand reducing tension and stress. Location of PTO switches minimizes unintentional usage.
13. Upholstery: Alcantara upholstery for less sweating. Storage space under the cover.
14. Designed in Finland.



# SMART FARMING BUILT IN.

Valtra offers a set of smart farming technologies that work seamlessly together – Auto-Guide, ISOBUS, AgControl™ Section, AgControl™ Variable Rate and TaskDoc – which you operate from the SmartTouch terminal. By automatically guiding your tractor and implements, these improve your accuracy and precision, reduce working time, and make sure you get better yields and better return on your investment.





Smart farming relies on positioning signals from satellites to map your fields and to guide your tractor. Satellite guidance makes automatic steering more accurate than manual steering, so your tractor will be exactly where it needs to be at every turn, in every field, in all conditions.

When your tractor is located correctly, the implements are always in the right place too. Using satellite maps and ISOBUS control, your implements can then be automated to

vary the way they work in different parts of each field and in different rows. For example, AgControl Section automates section control functions in implements and AgControl™ Variable Rate automates and controls variable rate application functions.

Our technology is all designed in-house and we use the highest quality suppliers to ensure consistently high build quality and outstanding reliability. And all hardware and software components are optimized for each specific tractor.

## VALTRA CONNECT

Valtra Connect is a telemetry solution that records tractor activity and GPS movements, all the time. It can display history and real time data on your mobile device and you can access the data anywhere, anytime. Using this data, you and your Valtra service partner can anticipate maintenance needs, and react faster to solve minor issues and avoid extra visits to your authorized service centre.





# WHY SETTLE FOR THE BEST WHEN YOU CAN HAVE MORE?

The Valtra Unlimited service creates unlimited possibilities. Get a unique exterior package with a special paint color, or choose interior features such as leather and chrome. Select business applications, like a bottom grader, or special military features. Everything is installed at the factory and covered by the factory warranty.

The sky's no limit!



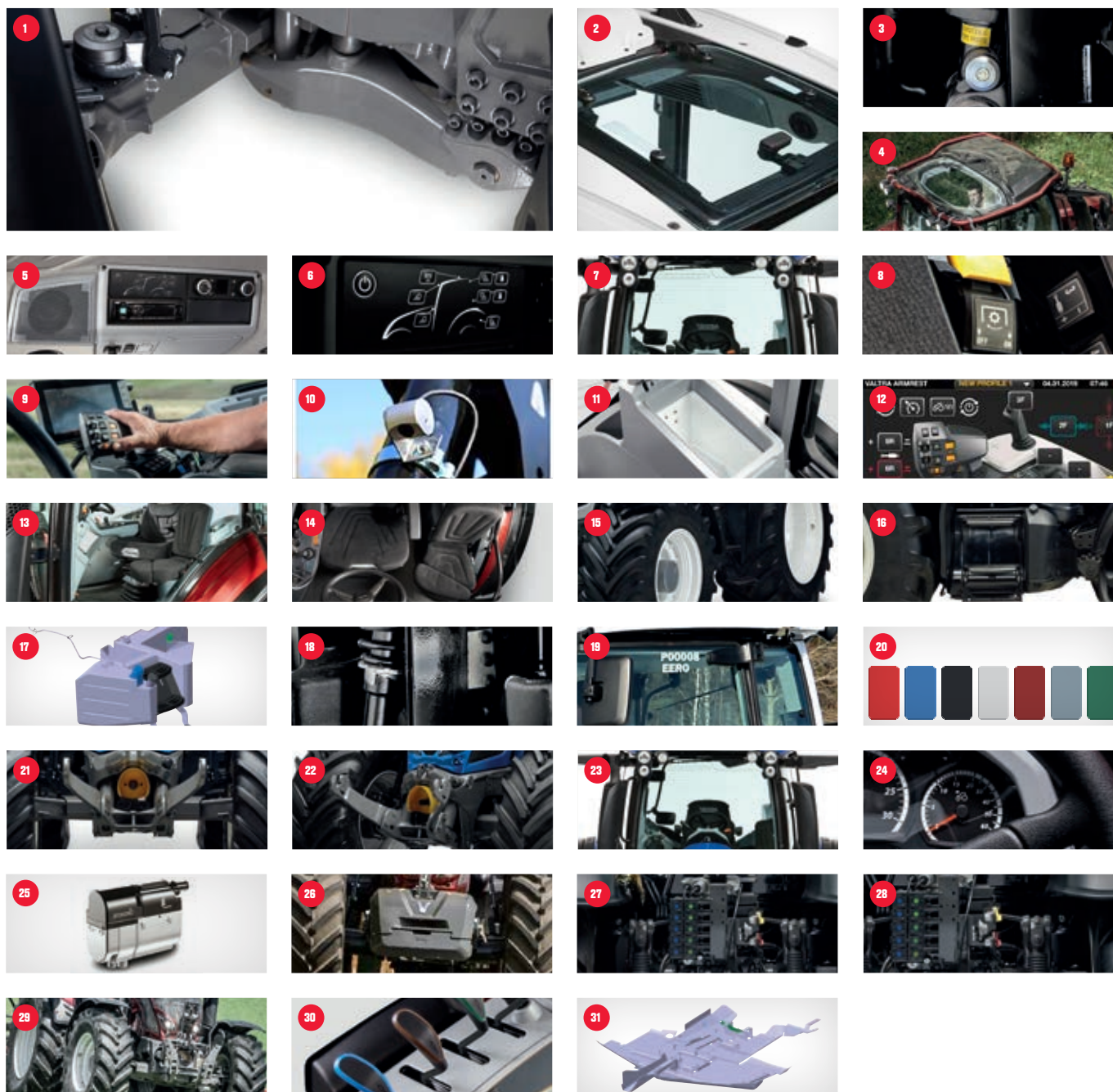
N Series / 105 - 201 hp





# EVERY FARMER IS DIFFERENT. SO IS EVERY N SERIES TRACTOR.

Valtra is famous for the à la Carte system. Tailor your tractor using the electronic ordering tool together with your dealer. This is how we ensure that you will get the working machine that matches your needs exactly.





1. **Hydraulic front axle suspension** / With 100 mm travel, the superb oscillation and a 7.5 ton load capacity, the hydro-pneumatic suspension offers excellent ride comfort for all tasks. In N134 models, the new AIRES system takes comfort to a new level.
2. **Roof window** / The largest roof window in the market place gives clear visibility in front loader work. The window can be opened. Manual sun protection as standard. FOPS approved.
3. **AutoComfort** / Auto-levelling pneumatic cab suspension maximizes operating comfort by adapting the suspension according to the working environment.
4. **Skyview roof** / The new Skyview roof lets in as much sky as you like. It provides the best visibility in reverse direction. The roof window made of polycarbonate has a wiper as standard.
5. **Premium audio system** / select your option up to the next generation 150 watt (25W+25W+100W) audio system offers superior sound, thanks to two high-quality integrated two way roof speakers especially customized for Valtra, a Bluetooth player, active subwoofer and amplifier.
6. **Premium working lights** / LED working lights turn the night into day. The package includes 2 front, 4 rear and 2+2 mid mounted LED working lights.
7. **Heated windscreen** / The invisible heating wires effectively remove fog and frost from the windscreen. This feature makes sure you have great visibility in winter and in summer.
8. **Sigma Power** / More power for PTO work
9. **TwinTrac** / Work in both driving directions efficiently – unique, only with Valtra. TwinTrac allows the operator to perform a wide range of applications more effectively. In addition, mowing in reverse puts significantly less strain on the operator's body and mind.
10. **Safety camera** / For a good view of the hitch and implement. A display is also included in HiTech and Active. SmartTouch works as a display in Versu and Direct
11. **Cool box** / An integrated electric coolbox with a capacity of 8,4 litres making a 1,5 litre bottle fit easily. Located on the left side of the operator.
12. **U-Pilot** / Headland management in Versu and Direct. The programs can be recorded or manually edited. It allows the operator to concentrate on the implement and its operations instead of controlling the functions.
13. **Evolution seat** / Superior seating comfort with pneumatic suspension. The automatic level adjustment, adjustable damping, cooling and heating make sure that you feel comfortable even on the longest working days.
14. **Passenger seat** / Plenty of room for a co-driver. The passenger seat can be tilted down and used as a table.
15. **Tyre options** / A wide selection of tyres for different tasks and applications.
16. **Toolbox** / Keep your tools in a safe place. Space for a toolbox is located in the water sealed technical compartment under the right side steps.
17. **Steel tank** / The factory-fitted tank has a capacity of 165 litres. It offers improved ground clearance, making the underside of the tractor flat. The tank is made of durable, high-quality sheet metal which protects the tractor against knocks on uneven terrain.
18. **Mechanical cab suspension** / The mechanical suspension enhances operating comfort. The suspension can be adjusted to match the weight in the cab.
19. **Customer name** / Your name decal on both sides of the cab.
20. **7 Standard colours** / Red, blue metallic, black metallic, white metallic, red metallic, silver metallic, green metallic.
21. **Front PTO** / Integrated front power take off with a 1000 rpm counter clockwise rotation.
22. **Front lift** / 4.7 ton lift capacity
23. **270° wiper** / Good visibility 365 days a year. The 270° windscreen wiper offers maximum visibility in difficult conditions. In heavy rain it wipes a narrower area to increase speed.
24. **50 km/h** / Up to 53 km/h at lower engine rpm. In models N174 even higher speeds are available.
25. **Preheater** / The fuel operated engine heater ensures a warm cab even in the coldest morning. The heater can be operated remotely by smartphone.
26. **Extra weights** / Front, rear wheels and ballast
27. **Valve packs** / At the rear up to four or seven service valves, in front up to four
28. **Power Beyond** / couplings available with load sensing hydraulics
29. **Front hydraulics** / Optional front lift capacity 47 kN
30. **Hydraulic pump** / 73/90/115/160/200 l/min. A wide selection of high capacity hydraulic pumps guarantees that you'll get the right output for your work.
31. **Bottom protection** / For forest and arable work the 6mm bottom protection makes sure the tractor is protected. With the bottom protection, the excellent ground clearance remains unchanged.



# PEACE OF MIND. IN YOUR HANDS.

We believe in a seamless connection between our customers, dealers, machines and the Valtra factory. When connected you can select the desired service and warranty packages to meet your expectations and requirements. We take care of you, so you can take care of your business.



## CONNECT

TRACTOR DATA, INFORMATION  
AND SERVICES.



## CARE

FACTORY EXTENDED  
WARRANTY.



## GO

MAINTENANCE  
CONTRACT.



### CONNECT

#### Stay connected anywhere, anytime

By choosing Valtra you are connecting with a team of professionals that help you make the most of your business. You can contact your local support through our online customer portal which also gives you 24/7 access to tutorials, contractual information and services around your machines. The Valtra Connect telemetry solution records tractor activity and GPS movements, all the time. It can display history and real time data on your mobile device and you can access the data anywhere, anytime. Using this data, you and your Valtra service partner can anticipate maintenance needs, and react faster to solve minor issues and avoid extra visits to your authorized service centre.

### CARE

#### Total peace of mind

With Valtra Care extended warranty contracts you can find ultimate peace of mind and security against additional repair costs of non-wearing parts. Care allows you to set your overheads when you purchase your Valtra tractor, or when the standard warranty expires. They are flexible, offering three excess levels – 0€, 290€ or 590€ and are available up to 5 years or 6,000 hours.

### GO

#### Maximise your uptime

Fix your costs at the point of purchasing your Valtra machine and ensure the optimum performance, while guaranteeing efficiency and maximize the residual value of your machine! Valtra Go service contracts ensure regular and thorough maintenance which will prolong the reliable operation of your Valtra tractor. Maintenance costs are small compared to repair costs resulting from lack of maintenance. The Valtra Go service package includes all prescribed maintenance work bookable up to 10,000 hours for new and used machines.

### YOUR OWN VALTRA DEALER

Your Valtra dealer represents the best tractor and implement expertise in your area. He understands the technical aspects of your tractor and the challenges you face. You can always turn to your dealer and receive the best service from consultancy, maintenance, repair and spare parts to the purchase of a new piece of equipment. Valtra dealers are independent entrepreneurs. AGCO audits its dealer representatives each year to ensure that you get the best possible service.







### GENUINE PARTS AND HIGH QUALITY ACCESSORIES - ALWAYS AVAILABLE

Valtra's comprehensive spare parts service supplies the parts you need – as fast as by the next morning. This helps you keep your tractor productive during the busy ploughing and harvesting seasons. The AGCO Parts label ensures that you are getting original Valtra spare parts that have been thoroughly inspected and tested.

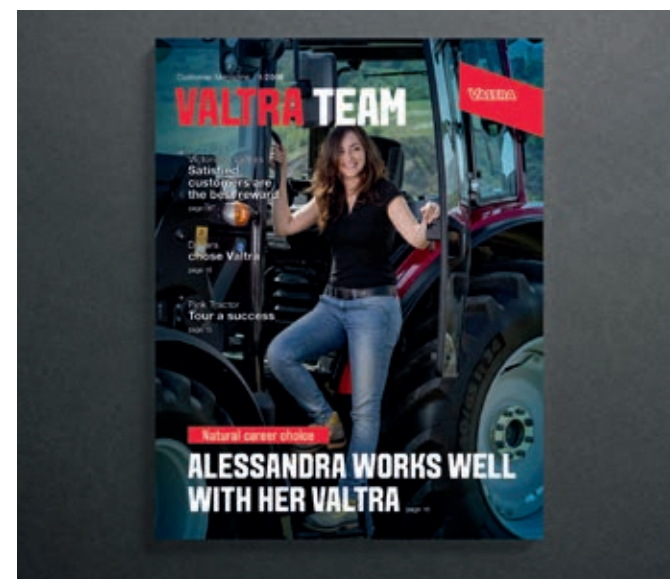
### AGCO MAKES THEM UNBEATABLE, WE MAKE THEM AFFORDABLE.

At AGCO Finance we tailor your personal finance solution based on your cash flow and operation. Tell us how much you can afford on a monthly basis and we will create a flexible payment schedule according to your business needs, taking seasonal variations into account.

As a full service provider we also offer financing services such as leasing, rental and insurance. Our services may vary between countries, so please check our website or your nearest dealer for the available offering.

### VALTRA UNLIMITED

The Valtra Unlimited studio at the Suolahti factory is widely known for its capability to make customer wishes come true. The studio can fit any accessories and equipment that are not available directly from the production line during the normal manufacturing process. Our Valtra Unlimited mechanics are qualified experts who are supported by the skills and expertise of the entire factory. This ensures the highest levels of quality and safety also for our customised products. All the accessories and equipment fitted by the Valtra Unlimited studio are covered by the factory warranty, and we also supply all the servicing and spare parts for them.







#### **VALTRA TEAM**

Valtra Team is our customer magazine, published twice a year. Each issue contains useful information about the latest innovations and the most efficient working methods. You can also access the magazine's archives online and read articles dating back to 2000.

#### **AGCO ACADEMY**

Tractors and related technologies, especially precision farming technologies, are developing at a rapid pace. The Valtra Academy continuously trains Valtra dealers and service technicians, so that the first-class and up-to-date expertise that you get from your Valtra dealer today will continue to meet your needs in the future.

#### **VALTRA COLLECTION**

The Valtra Collection offers high-quality clothing and accessories for work and leisure. The materials and details are carefully selected. The clothing reflects Valtra's modern design language, with light, yet extremely durable materials that combine style and functionality.





# TECHNICAL SPECIFICATIONS

TRACTOR MODEL	N104	N114E	N124	N134	N154E	N174
DIMENSIONS						
with tyres	460/85R38	520/85R38				
Wheel base [mm]	2665					
Length [mm]	4656					
Height low cab position [mm]	2850	2900	--			
Height suspended/high cab position [m]	2910	2960				
Height SKYVIEW cab [mm, any position]	+ 64					
Turning radius [m]	4.5					
Fuel capacity STD [l]	235					
Fuel capacity [l] large tank/forest tank)	315/160					
AdBlue capacity STD / forest tank [l]	45 (25)					
Ground clerance MID [mm]	505	550				
Weight (front axle suspension, full tanks) [kg]*	5350	6100	6300*			
Weight distribution F/R [ca. %]	40/60					
Max front axle weight [kg]	4000**				5000	
Max rear axle weight [kg]	6000	8000				
Gross vehicle weight [kg]	8000	10000		11000		

\* Hitech (Active, Versu, Direct: 6500)

\*\* with suspension or HD axle 5000



TRACTOR MODEL	N104	N114E		N124	N134	N154E		N174
ENGINE	std mode		eco mode		std mode		eco mode	
Engine, Agco Power	44 AWF				49 AWF / 49 LFTN-D5			
No. of cylinders /Capacity [l]	4/4.4				4/4.9			
Emission control	Stage IV with DOC and SCR catalysts				Stage IV or Stage V (DOC + DPF + SCR)			
Standard Max Power, [kW]	77	85	85	92	99	114	114	121
Standard Max Power, [hp]	105	115	115	125	135	155	155	165
Boost Max Power, [kW]	85	92	92	99	107	121	121	136
Boost Max Power, [hp]	115	125	125	135	145	165	165	201
at engine speed [r/min]	1900	1900	1750	1900	2100	2100	1900	2100
Nominal engine speed [r/min]	2100	2100	1900	2100	2100	2100	1900	2100
Standard Max Torque, [Nm]	470	500	540	550	570	610	660	680
Boost Max Torque, [Nm] 680 740 780 900 870 910 1000	510	540	570	580	620	660	700	730
at engine revs 1500 1500 1100 1500	1500	1500	1250	1500	1500	1500	1250	1500
TRANSMISSION OPTIONS								
HiTech	X	X	X	X	X	X	X	X
HiTech with HiTrol turbine clutch	X	X	X	X	--			
Active	--				X	X	X	X
Versu	--				X	X	X	X
Direct	--				X	X	X	X
POWER LIFT								
Lift capacity rear, max [kN]	63	63(78 opt)			78			
Lifting range, max [mm]					862			
Optional front lift capacity [kN]					47			
Turning radius (600/65R28, track 1960mm) [m]					4.5			



TRANSMISSION	HITECH	HITECH & HITROL	ACTIVE	VERSU	DIRECT
AVAILABILITY	N104-N174	N104-N124	N134-N174	N134-N174	N134-N174
5 step Powershift	X	X	X	X	--
Creeper	Option	Option	Standard	Standard	--
CVT	--				X
Speed range	0.6-43				0-43
Alternative speed range 0.7-53 0-53	0.7-53*) 0.7-57 High Speed**				0.7-53, 0.7-57 High Speed**
Group gear (work areas)	A,B,C,D				
Ranges automated	C-D				
Number of speeds with creeper	30+30R				CVT
Number of creeper gears	10+10R				CVT
Brakes	multi-disc/plates oil cooled wet brakes with hydraulic boost				
Type of main clutch	wet multi-disc				
Front axle suspension type	Stage IV models: Hydropneumatic, Stage V models: Pneumatic				
HYDRAULICS					
Hydraulic system	open centre		load sensing		
Pump capacity	73(90)		115 (160)/(200)		
Oil available from implement	40		47		
Mechanical valves rear	up to 4			--	
Power Beyond	--		option		
Electronic valves rear	--			up to 5	
ON/OFF valve rear	--		option	1 std, (2 option)	
Electronic valves front	2, 3 or 4				
POWER TAKE OFF					
540 / 1000			Standard		
540/540E/1000			Option		
540E/1000/1000E			Option		
Ground speed PTO			Option		
Front PTO 1000 Option			Option		

\*) Not in all markets and not model N104. \*\*) Not in all markets and only model N174



CAB	STD	SKYVIEW
Operator's seat swivel angle 180°	Standard	
Co-drivers seat with safety belt	Option	
Noise level [dB] 70	Standard	
No. of doors	1 or 2	
No. of windows	4 or 5	5 or 6
Roof window front	Option	--
Roof window rear	Standard	
Window area with roof window [m²]	6.22	6,53
Windscreen wiper work angle	STD 180°, Optional 270°	
Valtra basic controls	Standard	
SmartTouch armrest	Versu and Direct	
Air conditioning and heater in the roof	Option	Standard
Extra heater for footwell	Option	Option
Automatic climate control with 2 heaters	Option	--
Cool Box	Option	
Mechanical cab suspension	Option	
AutoComfort semi-active air suspension	Option	
TwinTrack reverse drive	Option	
QuickSteer	Option	
AutoGuide (Sub-metre or dm accuracy)	Option	--
Safety camera	Option	



**VALTRA N SERIES:  
SMART IN SIZE.  
PERFECT IN  
PERFORMANCE.**

**VALTRA**



Valtra Inc.  
Valmetinkatu 2  
FI-44200 Suolahti  
Tel. +358 (0)2045 501

Valtra® is a worldwide brand of AGCO.

[www.valtra.com](http://www.valtra.com)  
[www.facebook.com/ValtraGlobal](https://www.facebook.com/ValtraGlobal)  
[www.youtube.com/valtravideos](https://www.youtube.com/valtravideos)

The tractors that appear in this brochure may be equipped with special options. Changes possible - all rights reserved.

**YOUR  
WORKING  
MACHINE**