

# VALTRA S SERIES

290 - 405 HP

**VALTRA**



**YOUR  
WORKING  
MACHINE**



# BIG JOBS JUST GOT BETTER.

Your land is your life.  
Your farm is your foundation.  
Your crop is your career.  
Your tractor is the tool of your trade.

That's why it's a Valtra.  
Like a craftsman's trusty tools, your Valtra gives you the confidence and the guts to get the job done. Every day. Every time. In every working environment.

At Valtra, we have always chosen the path less walked – because where we come from, that's how the paths are. We don't hesitate to walk the extra mile for you. We do things like this because it's the best way to do them. And because we believe in getting things done.

You don't compromise. Neither do we.

Get the job done.  
Get a Valtra.  
Your working machine.

S Series 1200 – 405 hp





## CONTENTS

Valtra S Series.....	2
For professionals.....	4
Highlights.....	8
ACGO POWER engine .....	10
Transmission.....	12
Nordic design .....	14
SmartTouch armrest.....	16
Smart Farming.....	18
Connect, Care & Co.....	20
Services .....	22
Technical specifications.....	24



# FOR PROFESSIONALS WITH STRONG EXPERIENCE

Valtra is an international brand from Scandinavia. Our Nordic heritage means that Valtra tractors perform the tasks they were designed and bought for – safely and efficiently. This is backed up by Valtra's values: individuality, reliability and functionality.



Valtra's strength has always been our willingness to listen to our customers. According to customer surveys, the three most important criteria for selecting Valtra are reliability, low operating costs and a high return on investment. The fourth generation S Series has been tested in demanding conditions to optimise its technical attributes, ergonomics, serviceability and productivity. We are confident that the new S Series will meet all your demands, both as a farmer and as an investor.

**A partner to farmers for over 60 years**

Valtra has been building tractors for over 60 years and grown to become one of the most recognised international tractor brands. Valtra now manufactures over 23,000 tractors a year. With our roots in Finland, all Valtra tractors are the products of Scandinavian industrial design and practical technical solutions. We became part of the AGCO family in 2004. As the global leader in agricultural technology, AGCO is proud to invest in Valtra's strong expertise and fine products.

As a Valtra customer, you also benefit from the support of AGCO's global organisation for financing, extended warranties, service contracts, leasing services, training, loyal customer programmes, precision farming technologies, telemetry solutions, and the biggest distribution network of agricultural machinery. Your Valtra S Series tractor comes with services that support the profitability of your business now and in the future.





# HAVE YOU CONSIDERED THE PROFITABILITY OF YOUR INVESTMENT? WE HAVE.



## MODELS AND HORSEPOWER

<b>S274 AVT</b>	270-290 HP	<b>S354 AVT</b>	350-380 HP
<b>S294 AVT</b>	295-325 HP	<b>S374 AVT</b>	370-400 HP
<b>S324 AVT</b>	320-350 HP	<b>S394 AVT</b>	405-405 HP



The fourth generation Valtra S Series is a tractor whose balanced performance helps you get the most out of your new investment – to maximise output and minimise costs. We have designed a reliable machine for you to which you can combine all the services you want. This allows us to ensure the best possible return on your investment.

S Series tractors have everything you need but nothing that is unnecessary. Each detail has been carefully thought out, as profitability is the sum of competitive technology, reliability, operating costs, ergonomics, services and resale value. This makes Valtra the rational choice of investors.

**The seeds of success have been sown**

The Valtra S Series is a big tractor and a big investment that you can rely on for big results. Its basic features have been designed to handle even the toughest tasks. A powerful engine, stepless transmission

and optimal weight distribution ensure efficient performance. The hydraulic output is sufficient for use with heavy-duty implements, either on the field or in the forest. The large cab offers a spacious work environment, and driving comfort is in a class of its own.

Valtra is the only tractor manufacturer whose basic philosophy includes the ability to work equally well in both directions (Valtra TwinTrac reverse-drive system), which significantly facilitates many tasks.





# HIGHLIGHTS OF YOUR NEW WORKING MACHINE

The reliability of the S Series is the result of a perfect integration of carefully considered details. The combination of the perfect engine and transmission with the latest functional design and optimal usability makes the S Series a tractor unlike any other you have tried before.





1. Valtra SmartTouch user interface
2. AGCO Power 8.4 l engine (up to 405 hp)
3. Work lights, 4+2 in front, 6 at rear
4. TwinTrac
5. Ergonomic cab (69 dBa)
6. Pneumatic cab suspension
7. Diesel tank (600 litres)
8. AdBlue tank (60 litres)
9. Valtra's 4th generation design (improved visibility)
10. New projector headlights (H7)
11. CVT transmission (AVT - AGCO Variable Transmission)
12. Hydraulic front axle suspension
13. Long wheelbase (3105 mm)
14. Integrated front linkage (50 Kn)
15. Auto-Guide ready as standard
16. LED rear lights. The S series is equipped with our famous 4th generation LED rear lights.
17. Second Technology terminal. IsoBus and Auto-guide can be ran from the second technology touchscreen



16

17

4



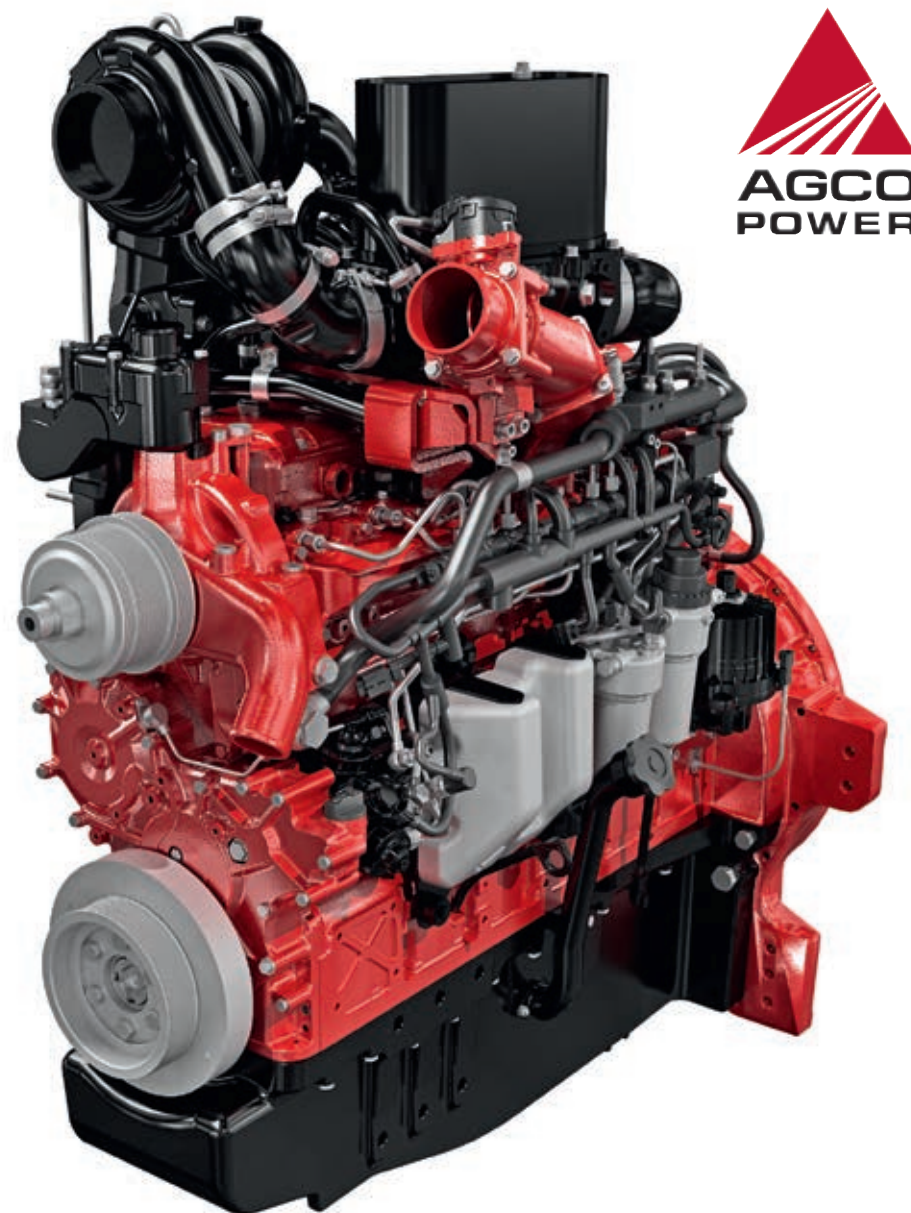


# THE BEST ENGINE ON THE MARKET

When you invest in a Valtra S Series, you are also investing in the most reliable and efficient engine technology available on the market. AGCO Power's roots as an engine manufacturer reach back over 60 years. All S Series engines come from the AGCO Power factory in Finland. AGCO Power is the global leader in off-road engines and the factory manufactures over 70 000 engines a year.

The reliable 84 AWF AGCO Power engine is the key to the productivity of the S Series. The engine uses the latest AGCO Power technology to comply with the stage v emissions standard. The same technology also ensures

the reliability of the engine without any increase in operating costs. AGCO Power's SCR technology was introduced with the S Series back in 2008, making it the first tractor in the world to feature this technology.





## TWIN TURBO POWER

The new Valtra S Series has two sequential turbochargers for better torque at lower revs and lower exhaust temperatures, which in turn increases durability and reduces maintenance requirements. It also enables even better driving characteristics and lower emissions reliably without the need for expensive technical solutions.



The fuel economy of the S Series has always been competitive relative to the achieved kilowatt hours, for example relative to the number of cubic metres of wood that can be chipped or the number of hectares that can be tilled. The 84 AWF AGCO Power engine on the new S Series reduces fuel consumption even further (5%). Exhaust gas recirculation is also employed to reduce the consumption of AdBlue.





S Series / 290 - 405 hp

# THE MOST POPULAR STEPLESS TRANSMISSION ON THE MARKET





The overall efficiency of the Valtra S Series is further enhanced by the stepless AGCO Variable Transmission (AGCO AVT). Manufactured by AGCO in Germany, this transmission has been the European market leader among big tractors for years. Its popularity is based on its versatility and, above all, its fuel efficiency. Especially for contracting work that requires a lot of driving between locations, the AGCO Variable Transmission enables you to drive efficiently at low engine speeds.

**An innovation that combines the best**

The S Series combines leading innovations by Valtra, AGCO Power and German engineers. The intelligent tractor control system developed by Valtra combines these to create an unbeatable package: power that is efficient, easy to use and reliable.

**Optimised transmission**

The AGCO Variable Transmission features different work areas for tasks requiring different speeds. Work area A is for all work situations requiring heavy pulling force, while work area B is for general road transport. This enables the pulling power and transmission efficiency to be optimised. For example, when driving at low engine speeds, the fuel savings are considerable.

**Up to 10% more power**

Valtra's innovative SigmaPower is standard on the S Series. Whenever extra power is required by the PTO or hydraulics, the engine's electronic management system boosts output by as much as 10% - up to 405 horsepower on the biggest S Series models. Power boost is also available when driving at speeds of over 20 km/h.





# WORK FASTER AND IN MORE COMFORT

The fourth generation cab on the Valtra S Series combines the best Nordic design with optimal usability. Studies prove that good ergonomics improve work performance, especially when using the Valtra TwinTrac reverse-drive system.



The cab features four-point pneumatic suspension, Valtra AutoComfort, that utilises the latest technology. Sensors relay information to the control system, which makes sure that the cab is always in the right position. AutoComfort also allows you to adjust the suspension according to your personal preference.

The S Series is designed for working 24/7, so air conditioning comes as standard. Even the driver's seat is ventilated. Working in the S Series is comfortable in all seasons of the

year. Other standard equipment includes six working lights at the front and rear, and LED lights are available as an option.

Valtra's TwinTrac reverse-drive system makes your work even more efficient, especially when working with mowers and other heavy-duty implements. S Series tractors have been designed from the outset to work effectively in both directions. Studies have shown that working in reverse with Valtra tractors is even more efficient than working in the forward direction, in certain applications,

due to the superior visibility. The optimal ergonomics make it easier to work longer hours, which further improves productivity.

**Reverse-driving in one easy movement** Switching to the reverse-driving position is fast and easy. An adjustable steering column is located at the rear of the cab along with an accelerator pedal, brake pedal and "clutch" pedal. All the other controls are located on the SmartTouch armrest, which rotates 180 degrees together with the driver's seat.



# COMMAND YOUR S SERIES

Valtra SmartTouch has raised usability to a new level. It's more intuitive than your smartphone. Settings are easily accessible within only two taps or swipes and all technology is integrated into the new easy-to-use format: Guidance, ISOBUS, Telemetry, AgControl and TaskDoc.



Easy to navigate menu structure.



The settings are logical and easy to set up with swipe gestures. All settings are automatically stored in the memory.



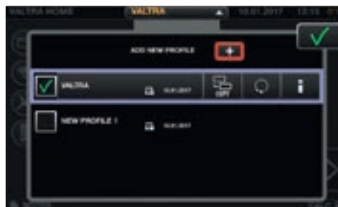
The 9" touchscreen, large controls, settings and functions are easy to understand.



You can assign any control to operate any hydraulic function, including front and rear hydraulic valves, front and rear linkages and the front loader.



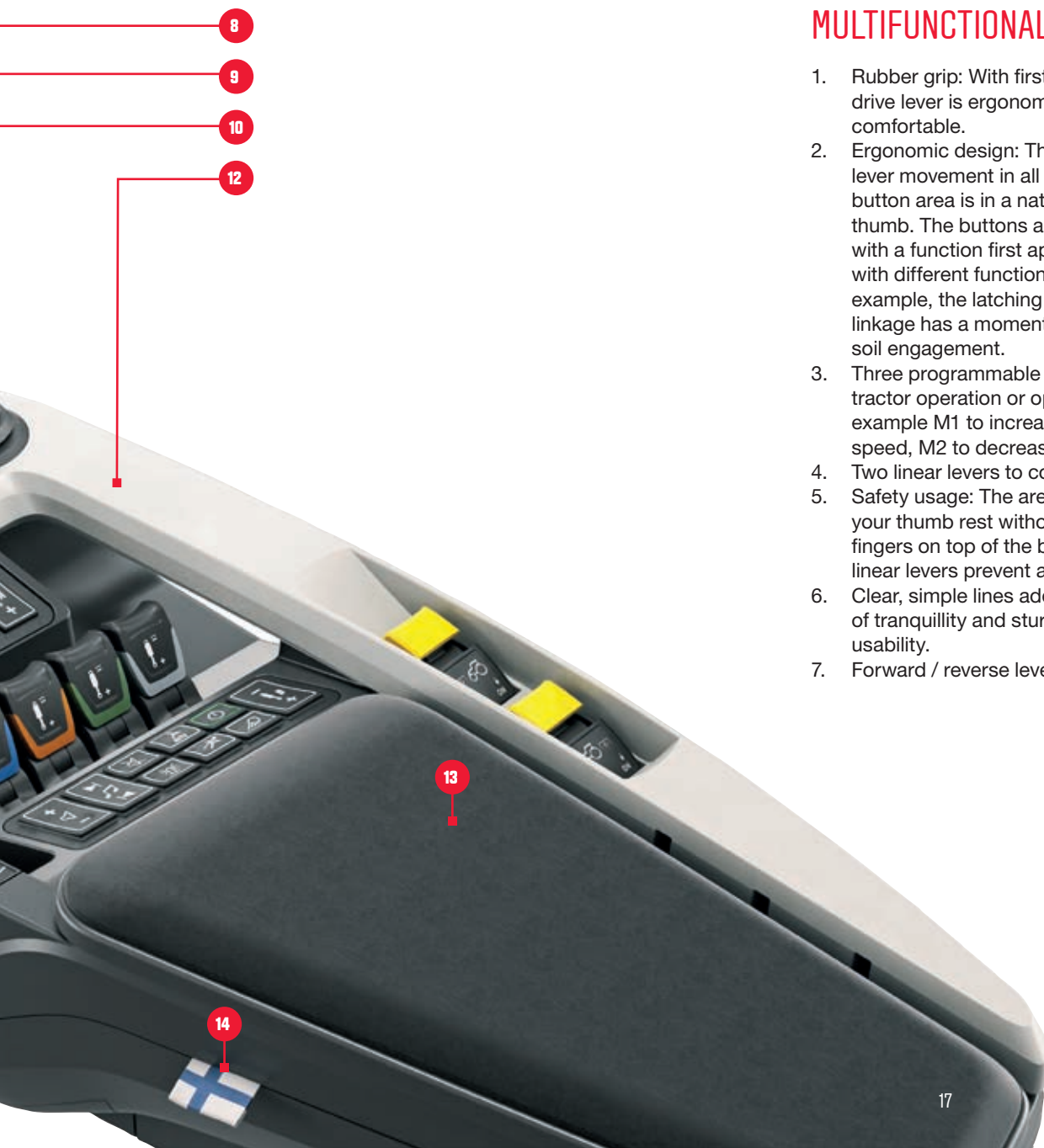
It's easy to configure the work lights using the 9" touchscreen. There are also on/off buttons for the work lights and beacon in the armrest.



Profiles for operators and implements which can be easily changed from any screen menu. All the setting changes will be saved in the selected profile.







## MULTIFUNCTIONAL LEVER

1. Rubber grip: With first-class materials the drive lever is ergonomic, easy to use and comfortable.
2. Ergonomic design: The design allows for easy lever movement in all four directions. The button area is in a natural position for your thumb. The buttons and switches are designed with a function first approach, therefore buttons with different functions look different. For example, the latching rocker switch for the rear linkage has a momentary down function for fast soil engagement.
3. Three programmable memory buttons for any tractor operation or operations (U-pilot). For example M1 to increase Driving speed or cruise speed, M2 to decrease it.
4. Two linear levers to control hydraulics.
5. Safety usage: The area between buttons lets your thumb rest without having to keep your fingers on top of the buttons. Humps around linear levers prevent accidental use.
6. Clear, simple lines add to the overall feeling of tranquillity and sturdiness, and improve usability.
7. Forward / reverse lever at the drive lever.

## SCREEN

8. No additional screens needed – Auto-Guide and safety camera displays are integrated into the SmartTouch screen. No need for additional monitors that block your visibility.

## JOYSTICK

9. The ergonomically positioned hydraulic joystick now includes a 3rd control for hydraulics on top.

## BUTTON & REAR LINKAGE AREA

10. Buttons: Their concave and convex shape helps you find frequently used buttons easily and quickly.
11. Rear linkage - The easy-to-use limiter enables even the smallest adjustments of the rear linkage.

## DESIGN

12. The functional structure of the armrest provides a good grip on rough terrain. All functions are easy to access due to the logical layout and the armrest gives good support to your hand reducing tension and stress. Location of PTO switches minimizes unintentional usage.
13. Upholstery: Alcantara upholstery for less sweating. Storage space under the cover.
14. Designed in Finland.



# SMART FARMING BUILT IN.

Valtra offers a set of smart farming technologies that work seamlessly together – Auto-Guide, ISOBUS, AgControl™ Section, AgControl™ Variable Rate and TaskDoc – which you operate from the SmartTouch terminal. By automatically guiding your tractor and implements, these improve your accuracy and precision, reduce working time, and make sure you get better yields and better return on your investment.



Smart farming relies on positioning signals from satellites to map your fields and to guide your tractor. Satellite guidance makes automatic steering more accurate than manual steering, so your tractor will be exactly where it needs to be at every turn, in every field, in all conditions.

When your tractor is located correctly, the implements are always in the right place too. Using satellite maps and ISOBUS control, your implements can then be automated to

vary the way they work in different parts of each field and in different rows. For example, AgControl Section automates section control functions in implements and AgControl™ Variable Rate automates and controls variable rate application functions.

Our technology is all designed in-house and we use the highest quality suppliers to ensure consistently high build quality and outstanding reliability. And all hardware and software components are optimized for each specific tractor.





# PEACE OF MIND. IN YOUR HANDS.

We believe in a seamless connection between our customers, dealers, machines and the Valtra factory. When connected you can select the desired service and warranty packages to meet your expectations and requirements. We take care of you, so you can take care of your business.



## CONNECT

TRACTOR DATA, INFORMATION  
AND SERVICES.



## CARE

FACTORY EXTENDED  
WARRANTY.



## GO

MAINTENANCE  
CONTRACT.



### CONNECT

#### Stay connected anywhere, anytime

By choosing Valtra you are connecting with a team of professionals that help you make the most of your business. You can contact your local support through our online customer portal which also gives you 24/7 access to tutorials, contractual information and services around your machines. The Valtra Connect telemetry solution records tractor activity and GPS movements, all the time. It can display history and real time data on your mobile device and you can access the data anywhere, anytime. Using this data, you and your Valtra service partner can anticipate maintenance needs, and react faster to solve minor issues and avoid extra visits to your authorized service centre.

### CARE

#### Total peace of mind

With Valtra Care extended warranty contracts you can find ultimate peace of mind and security against additional repair costs of non-wearing parts. Care allows you to set your overheads when you purchase your Valtra tractor, or when the standard warranty expires. They are flexible, offering three excess levels – 0€, 290€ or 590€ and are available up to 5 years or 6,000 hours.

### GO

#### Maximise your uptime

Fix your costs at the point of purchasing your Valtra machine and ensure the optimum performance, while guaranteeing efficiency and maximize the residual value of your machine! Valtra Go service contracts ensure regular and thorough maintenance which will prolong the reliable operation of your Valtra tractor. Maintenance costs are small compared to repair costs resulting from lack of maintenance. The Valtra Go service package includes all prescribed maintenance work bookable up to 10,000 hours for new and used machines.

### YOUR OWN VALTRA DEALER

Your Valtra dealer represents the best tractor and implement expertise in your area. He understands the technical aspects of your tractor and the challenges you face. You can always turn to your dealer and receive the best service from consultancy, maintenance, repair and spare parts to the purchase of a new piece of equipment. Valtra dealers are independent entrepreneurs. AGCO audits its dealer representatives each year to ensure that you get the best possible service.







### GENUINE PARTS AND HIGH QUALITY ACCESSORIES - ALWAYS AVAILABLE

Valtra's comprehensive spare parts service supplies the parts you need – as fast as by the next morning. This helps you keep your tractor productive during the busy ploughing and harvesting seasons. The AGCO Parts label ensures that you are getting original Valtra spare parts that have been thoroughly inspected and tested.

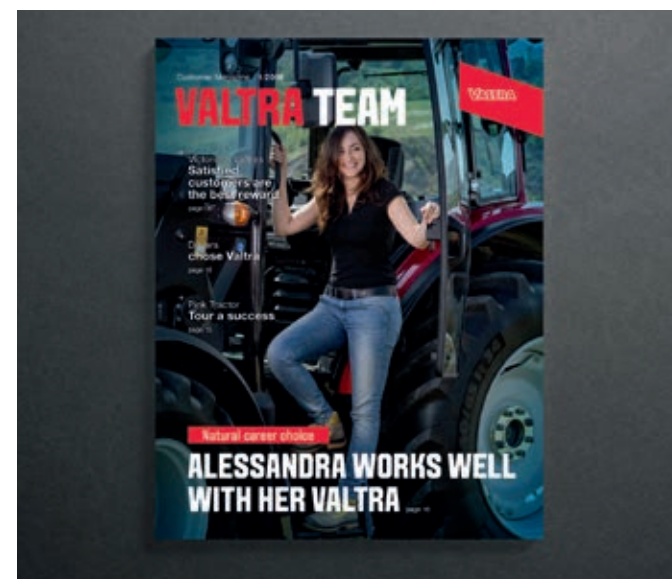
### AGCO MAKES THEM UNBEATABLE, WE MAKE THEM AFFORDABLE.

At AGCO Finance we tailor your personal finance solution based on your cash flow and operation. Tell us how much you can afford on a monthly basis and we will create a flexible payment schedule according to your business needs, taking seasonal variations into account.

As a full service provider we also offer financing services such as leasing, rental and insurance. Our services may vary between countries, so please check our website or your nearest dealer for the available offering.

### VALTRA UNLIMITED

The Valtra Unlimited studio at the Suolahti factory is widely known for its capability to make customer wishes come true. The studio can fit any accessories and equipment that are not available directly from the production line during the normal manufacturing process. Our Valtra Unlimited mechanics are qualified experts who are supported by the skills and expertise of the entire factory. This ensures the highest levels of quality and safety also for our customised products. All the accessories and equipment fitted by the Valtra Unlimited studio are covered by the factory warranty, and we also supply all the servicing and spare parts for them.







#### **VALTRA TEAM**

Valtra Team is our customer magazine, published twice a year. Each issue contains useful information about the latest innovations and the most efficient working methods. You can also access the magazine's archives online and read articles dating back to 2000.

#### **AGCO ACADEMY**

Tractors and related technologies, especially precision farming technologies, are developing at a rapid pace. The Valtra Academy continuously trains Valtra dealers and service technicians, so that the first-class and up-to-date expertise that you get from your Valtra dealer today will continue to meet your needs in the future.

#### **VALTRA COLLECTION**

The Valtra Collection offers high-quality clothing and accessories for work and leisure. The materials and details are carefully selected. The clothing reflects Valtra's modern design language, with light, yet extremely durable materials that combine style and functionality.





S Series / 290 - 405 hp

# TECHNICAL SPECIFICATIONS





TRACTOR MODEL	S274	S294	S324	S354	S374	S394
ENGINE						
Max. hp @ 2000 rpm, hp (kW)	270 (199)	295 (217)	320 (236)	350 (258)	370 (272)	400 (294)
Max. hp @ 2000 rpm, with boost, hp	290	325	350	380	400	405 (298)
Max. torque @ 1500 rpm, Nm	1220	1300	1390	1530	1540	1540
Max. torque @ 1500 rpm, with boost, Nm	1300	1390	1500	1590	1600	1600
Emission control	Stage V	Stage V	Stage V	Stage V	Stage V	Stage V
AGCO POWER engine	84 AWF	84 AWF	84 AWF	84 AWF	84 AWF	84 AWF
Volume, litres / Number of cylinders	8.4 / 6	8.4 / 6	8.4 / 6	8.4 / 6	8.4 / 6	8.4 / 6
TRANSMISSION						
Work area A (Field)	0.03-28 km/h forward, 0.03-16 km/h reverse					
Work area B (Transport)	0.03-50 km/h forward, 0.03-38 km/h reverse					
Operation modes	Automatic and manual					
POWER TAKE-OFF (REAR)	2 Speeds, 540E +1000 or 1000E + 1000					
1000 rpm @ engine rpm	2030	2030	2030	2030	2030	2030
540E or 1000E rpm @ engine rpm	1600	1600	1600	1600	1600	1600
Exchangeable PTO shaft	YES	YES	YES	YES	YES	YES
FRONT LINKAGE	Integrated, Standard equipment					
Lift capacity, kg	5000	5000	5000	5000	5000	5000
Front PTO	Option	Option	Option	Option	Option	Option
REAR LINKAGE	Autocontrol, Drive balance control and slip control					
Lift capacity, kg	12000	12000	12000	12000	12000	12000
Lower links	Cat 3 or 4					
HYDRAULICS	Closed centre load sensing (CCLS)					
Max. pump output, l /min	205	205	205	205	205	205
Hydraulic oil	Separate, max. 51 litres available for implements					
Work hydraulics, front	Up to 2 electronic spool valves, Joystick controls					
Work hydraulics, rear	4 or 6 electronic spool valves, 4 fingertip and 2 joystick controls					
Hydraulic couplers, rear	"Decompression" couplers with connect/disconnect under pressure function					
Steering	Hydrostatic, tilt/telescopic steering column					
QuickSteer	standard	standard	standard	standard	standard	standard



# TECHNICAL SPECIFICATIONS





TRACTOR MODEL	S274	S294	S324	S354	S374	S394
<b>BRAKES</b>	<b>Oil cooled, multi-plate discs, hydraulic actuation with power assistance</b>					
Parking brake	Integrated with shuttle lever, hydraulic					
<b>4WD FRONT AXLE</b>						
Type	STD	STD	HD	HD	HD	HD
Max steering angle	55°					
Suspension	Hydropneumatic					
<b>CAPACITIES</b>						
Fuel tank, litre	600	600	600	600	600	600
AdBlue tank, litre	60	60	60	60	60	60
<b>DIMENSIONS (TYRES FRONT, REAR)</b>	<b>600/70R28, 650/85R38</b>	<b>600/70R28, 650/85R38</b>	<b>620/65R34 710/75R42</b>	<b>620/65R34 710/75R42</b>	<b>620/65R34 710/75R42</b>	<b>620/65R34 710/75R42</b>
Weight at no load (with full tank, without additional weights), kg	10300 (12000)	10300 (12000)	10300 (12000)	10300 (12000)	10300 (12000)	10300 (12000)
Wheelbase, mm	3105	3105	3105	3105	3105	3105
Length, mm	4868	4868	4868	4868	4868	4868
Height to roof mm with 710/85R38 tyres	3382	3382	3382	3382	3382	3382
Minimum external width, mm	2550	2550	2550	2550	2550	2550
Ground clearance, mm	472	472	472	472	472	472
Turning radius with brakes / without brakes, m	7.4/8.4	7.4/8.4	7.4/8.4	7.4/8.4	7.4/8.4	7.4/8.4
<b>CAB</b>						
Suspension	4-post with 4 -point pneumatic suspension (AutoComfort)					
Standard equipment	De-luxe "flat floor" cab, opening rear window, air conditioning, four speed fan with heater unit, adjustable steering column, Valtra Evolution seat (automatic steering), ISOBUS ready, Auto-Guide ready, AgCommand ready (telemetry fleet management and diagnostics), 6 working lights at rear and 4+2 in front, Valtra ARM with terminal.					
Optional equipment	TwinTrac reverse-drive system, automatic air conditioning, Xenon work lights, foot heater, ISOBUS terminal, Auto-Guide 3000					





**VALTRA**



Valtra® is a worldwide brand of AGCO.

Valtra Inc.  
Valmetinkatu 2  
FI-44200 Suolahti  
Tel. +358 (0)2045 501

[www.valtra.com](http://www.valtra.com)  
[www.facebook.com/ValtraGlobal](https://www.facebook.com/ValtraGlobal)  
[youtube.com/ValtraVideos](https://youtube.com/ValtraVideos)

**YOUR  
WORKING  
MACHINE**

The tractors that appear in this brochure may be equipped with special options. Changes possible - all rights reserved.