



A5 HITECH SERIES

105-115 HP



VALTRA

YOUR WORKING MACHINE

WE WORK HARD TO MAKE HARD WORK EASY

At Valtra, our main focus is to understand your needs and deliver the best tractor experience. If you are looking for a small machine that gets the job done, the A series is your perfect partner. It shares many of its big brothers' features, but in a very compact form. It is fun to drive, light and agile, without compromising on power. Enter the spacious cabin, take a seat and see for yourself. This machine is built to work.

The award-winning A Series is the perfect example of our design principle, **form follows function**. It offers unrivalled balance between nimble movement and optimal power, both on the ground and with implements. As always with Valtra tractors, the A Series is easy to use and reliable for any task you face.

We always have your best workday in mind, and the real star of the A Series is the cabin and the ergonomics. The comfortable and functional cabin is easy to move in and out of. When comfortably seated, you'll have perfect visibility of your surroundings as well as full control of your work with the new and updated user interface.



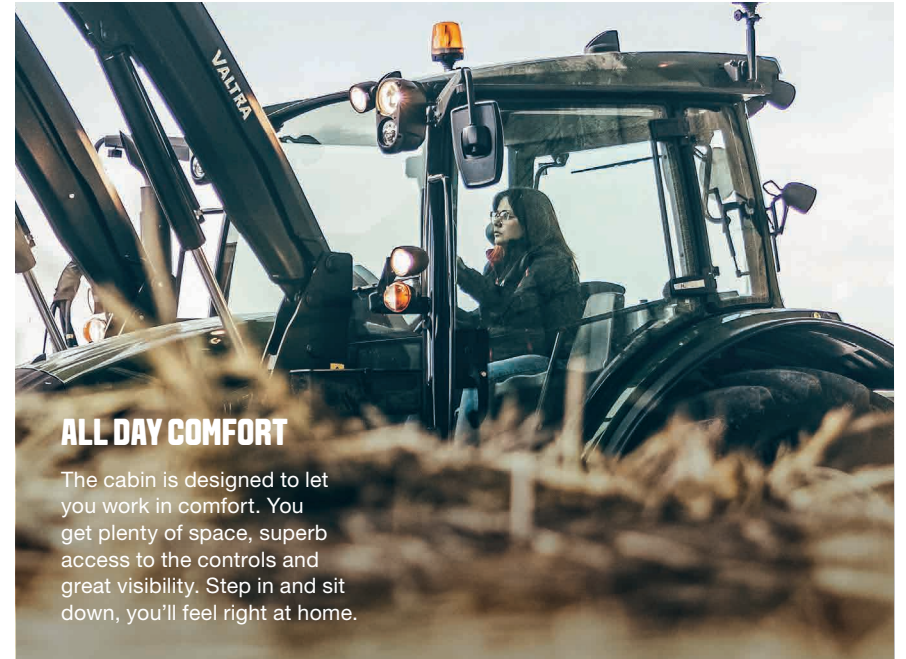
THE SMALL GIANT

The A Series is small in size and big in performance. Wherever you are, from tight spaces to open fields, it gives you the power to get the job done.



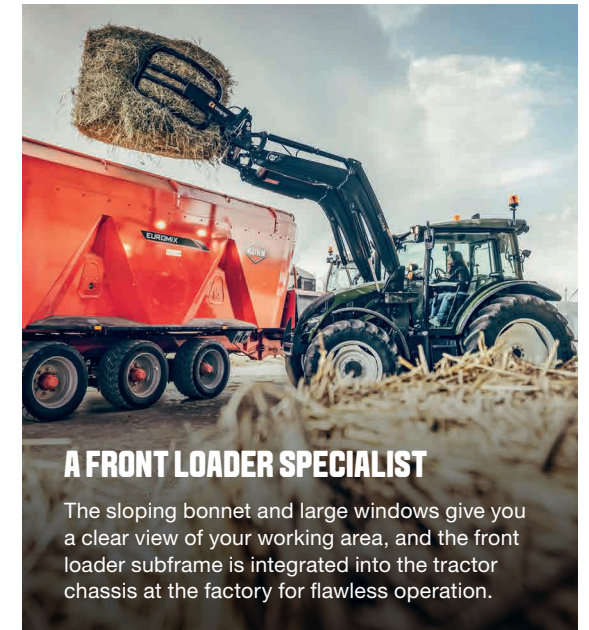
HITeCH4 TRANSMISSION

The HiTech4 electronic transmission is easy to use and helps you work without fatigue.



ALL DAY COMFORT

The cabin is designed to let you work in comfort. You get plenty of space, superb access to the controls and great visibility. Step in and sit down, you'll feel right at home.



A FRONT LOADER SPECIALIST

The sloping bonnet and large windows give you a clear view of your working area, and the front loader subframe is integrated into the tractor chassis at the factory for flawless operation.

JUMP IN AND GET GOING

The A Series is your working machine. Sit in the driver's seat and you'll see why. The spacious cabin lets you get straight to work, with nothing in your way and everything in easy reach.



2. SEE EXCELLENT ALL-AROUND VISIBILITY

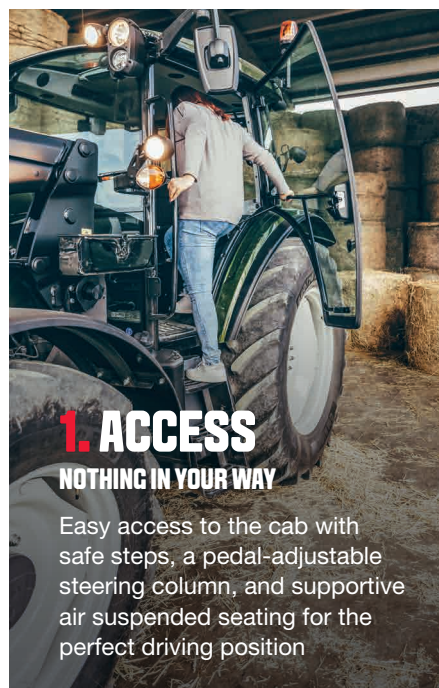
The cab offers exceptional all-around visibility: clear sightlines to the front and sides, unobstructed views to the rear for monitoring implements, and elevated forward visibility designed for efficient front loader work.



With the A Series, you get a compact tractor that delivers big productivity and all day comfort. The cabin is ergonomic and quiet, offering excellent visibility in all directions.

With Valtra, you'll find the perfect tractor to match your needs. The A Series is available with

the intuitive HiTech4 four-step powershift transmission, electronically controlled for effortless operation. Every A Series model also features Valtra's renowned shuttle transmission with an integrated handbrake, combining convenience with reliability



1. ACCESS NOTHING IN YOUR WAY

Easy access to the cab with safe steps, a pedal-adjustable steering column, and supportive air suspended seating for the perfect driving position.



3. WORK MADE TO BE PRODUCTIVE

The A Series is ergonomically designed, it's easy to use and it has the power you need to put your implements to work.

4. HITECH4 MODELS

ELECTRONIC TRANSMISSION CONTROL

A sophisticated solution with no gear levers and the appropriate speeds to match your application, and still easy to use.

5. POWER HYDRAULICS

GET THE MOST FROM YOUR IMPLEMENTS

High-output hydraulics on the A5 Series ensure fast response and efficient performance when working with implements or a front loader.

6. LOADER FIRST

DESIGNED FOR FRONT LOADER WORK

The balanced chassis makes working with Valtra's high quality front loaders easy and dependable. The great visibility and electronic control make it even better.



7. EASY SERVICE

MADE TO KEEP WORKING

Five fast checks guarantee an uninterrupted workday. All maintenance is easy to do.

8. LOW COST OF OWNERSHIP

EFFICIENT AND PRODUCTIVE

Affordable purchase is just the start of the story; compare the low fuel and service costs against the performance of the machine see how much you profit.

9. CONNECT, CARE & GO

THE A SERIES IS CONNECTED

Valtra Connect lets you monitor your A Series tractor in real time, giving you full visibility of machine status, operating data, and location from any device.

Owners receive timely notifications for warnings, service needs, and geofence breaches, helping you react quickly and protect your equipment. With Valtra Connect, you stay informed, improve uptime, and maintain complete control of your tractor—wherever you are

THE FRONT LOADER SPECIALIST



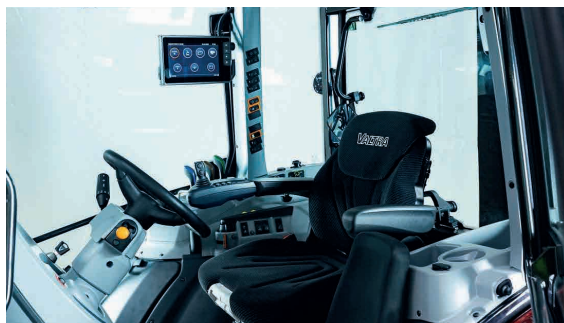
The A Series is designed to give you full control of your tractor and your front loader, so you can work safely and efficiently in all conditions. With its compact size, you get a tight turning radius. And with the large cabin windows and unobstructed view, you get excellent visibility of your load and your surroundings, even with the loader raised. The front loader itself has curved lift rods that follow the tractor bonnet line for even better visibility.

1. Clean and modern beam design with enclosed pipe work
2. Curved parallel lift rods that follow the tractor's bonnet line
3. Excellent visibility and a full view of tools and attachments
4. High pump capacity for efficient front loader work
5. Optional roof window for outstanding front visibility
6. Programmable forward and reverse speeds when changing direction
7. SoftDrive loader suspension and precise self-levelling
8. Lock-and-go system for quick loader attachment and detachment
9. Integrated heavy-duty subframe fitted at the factory



DESIGNED AROUND THE DRIVER

Valtra tractors are designed to help you get more done in a day. Every feature we add and every detail we update is done with ease of use, comfort and convenience in mind.



You might not even notice some details and that's the way we intended it. For example, with noise, it's what's not there that counts. The A Series cabin is designed to have a low noise level of just 75dB. The cab structure is another great example – it's narrow at the front to improve forward visibility yet it's wide at your shoulder line for maximum working comfort.

A PERFECT VIEW

The entire tractor is designed for excellent visibility. Starting with the compact engine and sloping bonnet, you get the best front-down visibility on the market. The spacious six-post cabin has an upward-curving windscreen and sweeping A-pillar for forward visibility, as well as a large rear window and a short roof for rear visibility. LED work lights provide powerful, clear illumination around the tractor, ensuring you can work confidently and safely in low-light or night-time conditions. With bright, energy-efficient lighting on all sides, your productivity doesn't stop when the sun goes down.

2-CAB SUSPENSION

The 5th generation A Series offers an optional mechanical cab suspension system that significantly enhances operator comfort. The air-suspended seat works together with the cab suspension to absorb constant vibrations and shocks, reducing fatigue and making long shifts noticeably more comfortable.



EASY HYDRAULIC CONTROL

All A Series models come with electrically controlled AutoControl power lift as standard, which delivers the optimal lifting capacity for the size of your tractor. With open centre hydraulics you get fast operation for both your front loader and your implements. Your tractor can be equipped with up to three remote valves and hydraulic flow control is also available as an option. The valves have quick couplings to let you attach and detach implements easily.



IMPROVED USER INTERFACE

The 5th generation A Series includes many improvements that make operating your tractor easier. These include an on/off switch for Autotraction, a new accelerator pedal and an improved rear powerlift switch.

HiTech4 models include 4WD and Differential Lock switches, an external PTO on/off switch on the rear mudguard, and optional factory fitted loader joystick.

VALTRA CONNECT

Valtra Connect is our advanced telemetry solution that continuously records your tractor's operating data and GPS location. You can access real-time information and machine history from your mobile device—anywhere, anytime.

Designed for modern fleet management, Valtra Connect gives farm owners and managers clear oversight of multiple tractors and operators. You can monitor working hours, machine performance, location, fuel use, and alerts in one view, helping you improve task planning, react quickly to issues, and keep every tractor working efficiently across the farm



VALTRA Connect telemetry for customer
Fully customer and user driven user experience



EASY-TO-USE VALTRA HI-TECH TRANSMISSION

The 5th generation A Series is equipped exclusively with the HiTech4 transmission. This system offers four ranges and four powershift gears, which can be set to AUTO for automatic, effortless shifting. Changing group gears is quick and intuitive thanks to the convenient rocker switch on the controller.

The HiTech4 also delivers a maximum road speed of 40 km/h, allowing you to move efficiently between fields. Full transport speed is achieved at reduced engine rpm, helping you save fuel while maintaining excellent driving comfort

HITECH

- Revolutionary Powershift : 4PS
- Open-centre hydraulics with 3 mechanical spools



1. The four robotized ranges (ABCD) are controlled by the lower switch
2. HiShift button behind the lever.
3. Upper switch controls the 4 speed powershift
4. Quick and effortless powershift changes when set to Auto

AUTOTRACTION ON ALL MODELS

Valtra's famous Autotraction lets you drive your A Series without using the clutch. Pressing AutoTraction, you can stop your tractor simply by pushing the brakes, and when you release the brakes, the tractor starts moving again. Autotraction is always available and ready to use. You can turn it on and off using a sturdy rocker switch on the B pillar. When you need to, you can easily engage the clutch by pressing both brake pedals at speeds below 20 km/h. In addition, all A Series tractors come with Valtra's renowned forward reverse shuttle with integrated park brake.



COMPACT TIER 3 4.4 LITER ENGINE

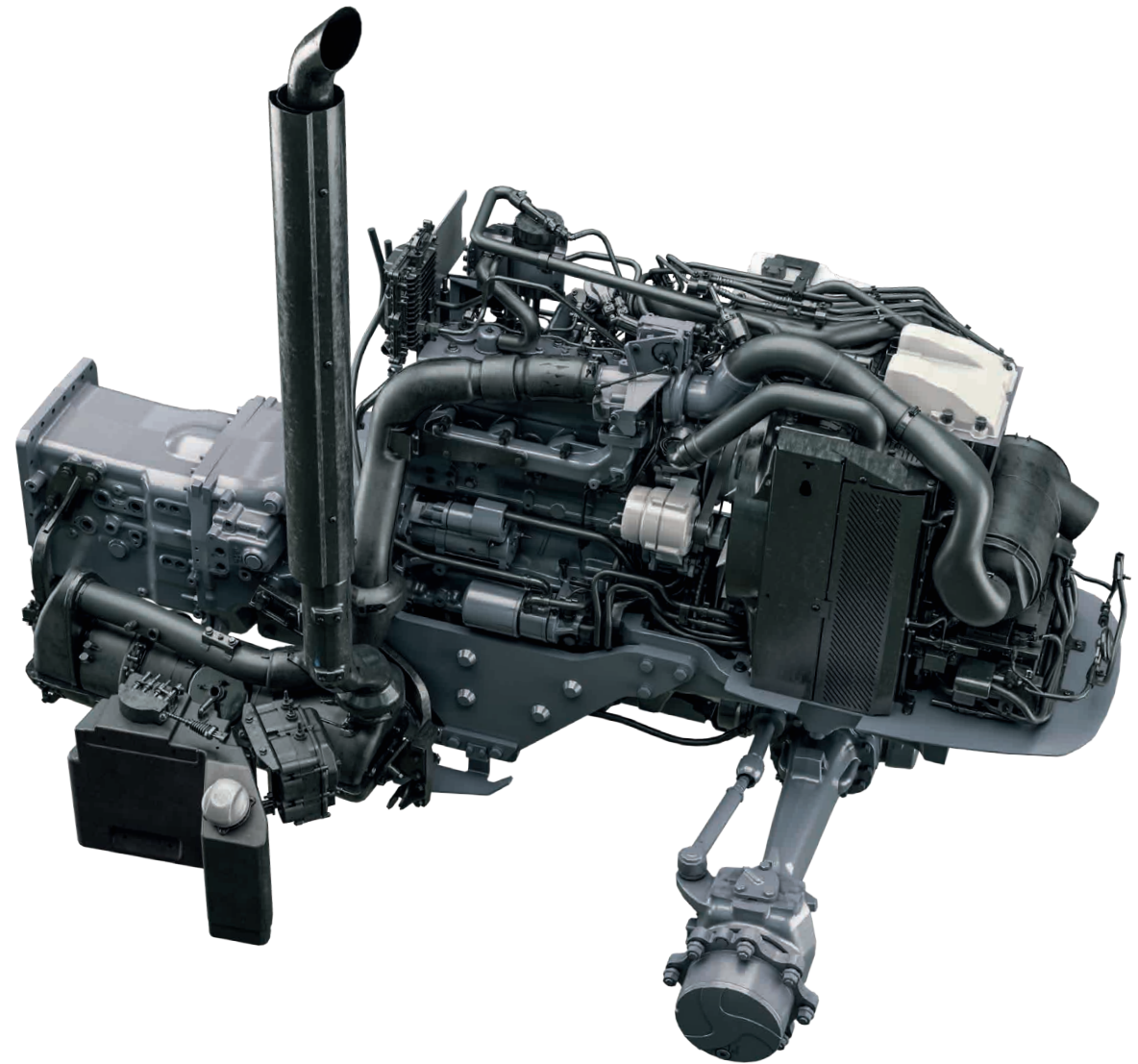
With the 5th generation A Series, you get more power from the advanced and compact AGCO Power engine with an optimised power curve for maximum low rpm torque and fuel efficiency.



The latest A Series models are powered by reliable AGCO POWER engines. These user-friendly engines feature advanced technology such as 1600-bar common-rail fuel injection and four-valve cylinder heads, delivering strong performance with excellent efficiency. They also offer a 500-hour service interval, helping

you maximise uptime and reduce maintenance downtime.

The compact engine means the bonnet can be smaller to give you a clear driving-direction view. The fully less regulated Common rail injection engine is ideal for the African market



ALWAYS CONNECTED. ALWAYS IN CONTROL.

You work hard. You operate in challenging and diverse environments, running five jobs at once, putting in long hours and hauling distances. It's our job to make your tractor experience the best it can be. Our easy Connect, Care & Go service concept offers unrivalled practicality that eases the daily operation and maintenance without adding to your costs. The best tractor experience is not just the machine, or the moment you purchase it – we, our partners and our vast dealer network are here to help you through the whole lifecycle of your tractor.

EASY DAILY SERVICE

You only need five quick checks to ensure an uninterrupted workday. All maintenance is easy to do.

- ✓ Visual check for tyre and oil leaks. Clean the grilles and radiator.
- ✓ Check the coolant level.
- ✓ Check the fuel level.
- ✓ Check the engine oil level.
- ✓ Check the transmission oil level.



PEACE OF MIND. IN YOUR HANDS.

We believe in a seamless connection between our customers, dealers, tractors and the Valtra factory. We take care of you, so you can take care of your business.



Valtra Connect

www.valtraconnect.com



CONNECT

TRACTOR DATA,
INFORMATION
AND SERVICES.

STAY CONNECTED ANYWHERE, ANYTIME

By choosing Valtra you are connecting with a team of professionals that help you make the most of your business. You can contact your local support through our online customer portal which also gives you 24/7 access to tutorials, contractual information and services around your machines. The Valtra Connect telemetry solution records tractor activity and GPS movements, all the time. It can display history and real time data on your mobile device and you can access the data anywhere, anytime. Using this data, you and your Valtra service partner can anticipate maintenance needs, and react faster to solve minor issues and avoid extra visits to your authorised service centre.



CARE

FACTORY EXTENDED
WARRANTY.

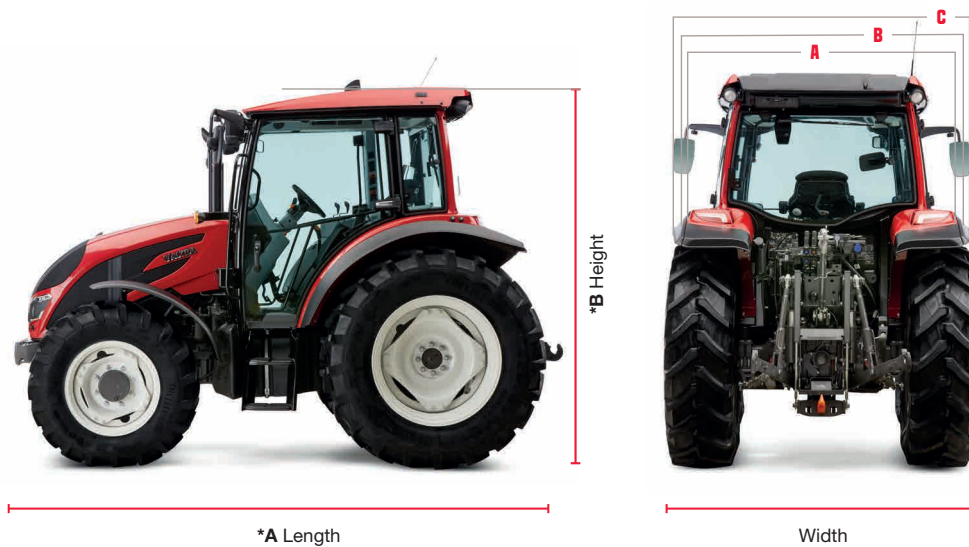
TOTAL PEACE OF MIND

With Valtra Care optional extended warranty contracts, you can find ultimate peace of mind and security against additional repair costs of non-wearing parts. Care allows you to set your overheads when you purchase your Valtra tractor, or when the standard warranty expires. Please speak to your Valtra dealer on the extended warranty packages available in your market.



A SERIES TECHNICAL SPECIFICATIONS

105 - 115 HP



Working weight kg:

A105-A115: 4300

Max total weight kg:

A105-A115: 8500

Mudguard widths:

Without extensions: 1858

Narrow: 2028

Wide: 2320

MODEL	MAX POWER		MAX. TORQUE NM
	HP	kW	STD
A105	105	78	435
A115	115	86	455





MODEL

A105-A115

DIMENSIONS

Wheel base [mm]	2430
*A Length [mm] (without front weight)	4367
*A Length [mm] (with front weight)	4713
*B Height [mm] (min tyre SRI)	2749
*B Height [mm] (max tyre SRI)	2799
Height rear axle centre to top of standard roof [mm]	1999
Turning radius (track 1704mm) [m]	4,04
Ground clearance FRONT [mm] (max/min)	446/496
Ground clearance MID [mm] (max/min)	428/478
Ground clearance REAR [mm] (max/min)	456/506
Weight (empty tanks) [kg]	4305
Weight distribution F/R [%]	40/60
Max front axle weight [kg]	3500
Max rear axle weight [kg]	6400
Max total weight [kg]	8500
Fuel capacity, [l]	160 (HT4)
Min tyre size	SRI 750 420/85R34 + 340/85R24
Max tyre size	SRI 800 420/85R38 + 340/85R28

MODEL

A105-A115

ENGINE

AGCO Power engine type	44 CWC3
No of cylinders	4
Engine volume, (litres)	4,4
Engine speed at max power [r/min]	2000
Engine nominal speed [r/min]	2200
Engine speed at max torque [r/min]	1500
Idle speed [r/min]	850
Low idle (shuttle lever on P) [r/min]	700
Oil-change interval (h)	500
Emission grade	Tier 3

TRANSMISSION

HT4	16+16R
HT4 with creeper	32+32R
Lowest creeper speed at 2200 r/min [km/h]	0,15

HYDRAULICS

Lifting power rear [max kN]	4300
Type of hydraulics	Open center
Pump capacity max [l/min]	98
Transmission and hydraulic oils	Common oil
Number of mechanical service valves rear	2 or 3
Oil available for implement [litres]	32

Power Take Off (PTO)

Engagement type	Electro-hydraulic
540 / 1000 @ engine speed [r/min]	1920 / 1960
540 / 540E / 1000 @ engine speed [r/min]	1920 / 1560 / 1960



VALTRA is a worldwide brand of AGCO.

Valtra Africa

AGCO South Africa
16 Pomona Rd, Gauteng,
Kempton Park

www.valtra.africa/en.html
www.youtube.com/@ValtraAfrica
www.facebook.com/ValtraAfrica

The tractors that appear in this brochure may be equipped with special options. Changes possible - all rights reserved.